



Part Number 900-312
Revision B March 2004

Contents

| | |
|--|---|
| Contents..... | 1 |
| Introduction | 1 |
| What's in the Box | 1 |
| Connect the XPort Evaluation Board | 1 |
| What You Need to Know..... | 3 |
| Hardware Address..... | 3 |
| IP Address..... | 3 |
| Install DeviceInstaller | 4 |
| Assign IP | 4 |
| Configure..... | 6 |

Introduction

Thank you for your decision to purchase the XPort™ Developer Kit from Lantronix. Use this Quick Start as a handy reference to get you up and running quickly. It will take you step by step through hardware setup and configuration and help you verify that everything is working.

Note: This document covers XPort™ Device Server versions XP1001000-01 and XP1001000-03.

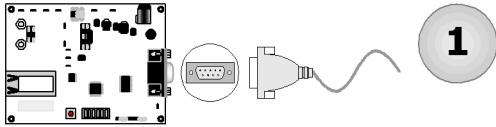
What's in the Box

| Part # | Component Description |
|---------------------------------|--|
| 080-258 | XPort™ Evaluation Board |
| XP1001000-01 or XP1001000-03 | XPort™ Device Server |
| 520-062 | +5VDC Universal Power Supply with snap-fit plugs for different countries |
| 500-107 | RS232 cable, DB9M/F |
| 500-110 | CAT5e UTP RJ45M/M Ethernet cable |
| CD-XPT-04 | CD with software utilities and documentation (in PDF format) |
| 500-109 | Serial adaptor, 25-pin to 9-pin |

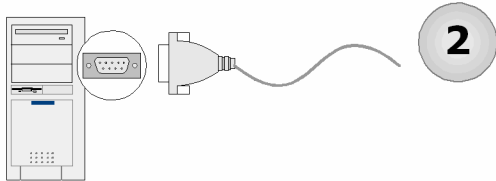
Connect the XPort Evaluation Board

To get started, you must connect the XPort Evaluation Board to your network. Follow the steps below:

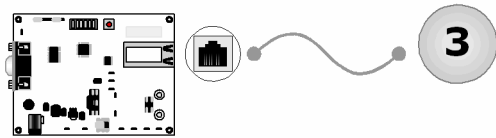
Note: This procedure assumes that the PC is connected to the network. You may connect a crossover Ethernet cable directly between the PC and XPort Evaluation Board if a network is not available.



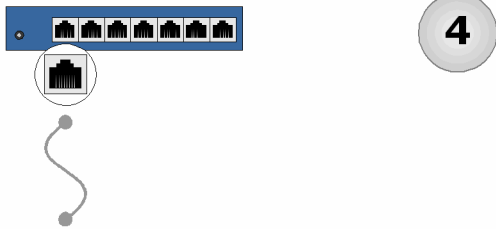
Connect the RS-232 cable to the serial interface of the XPort Evaluation Board.



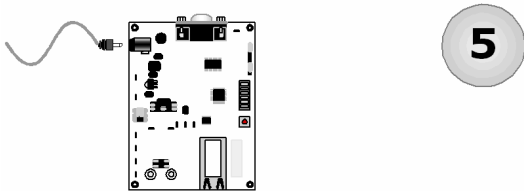
Connect the RS232 cable to an available serial port on the back of your PC.



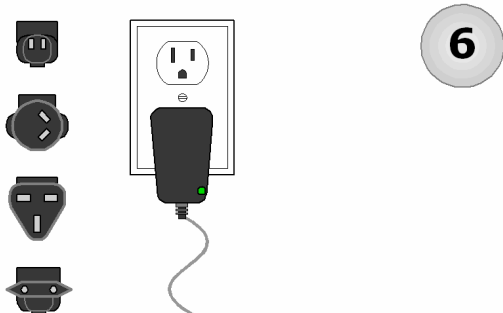
Connect one end of the Ethernet cable to the XPort.



Connect the other end of the Ethernet cable to your network hub.

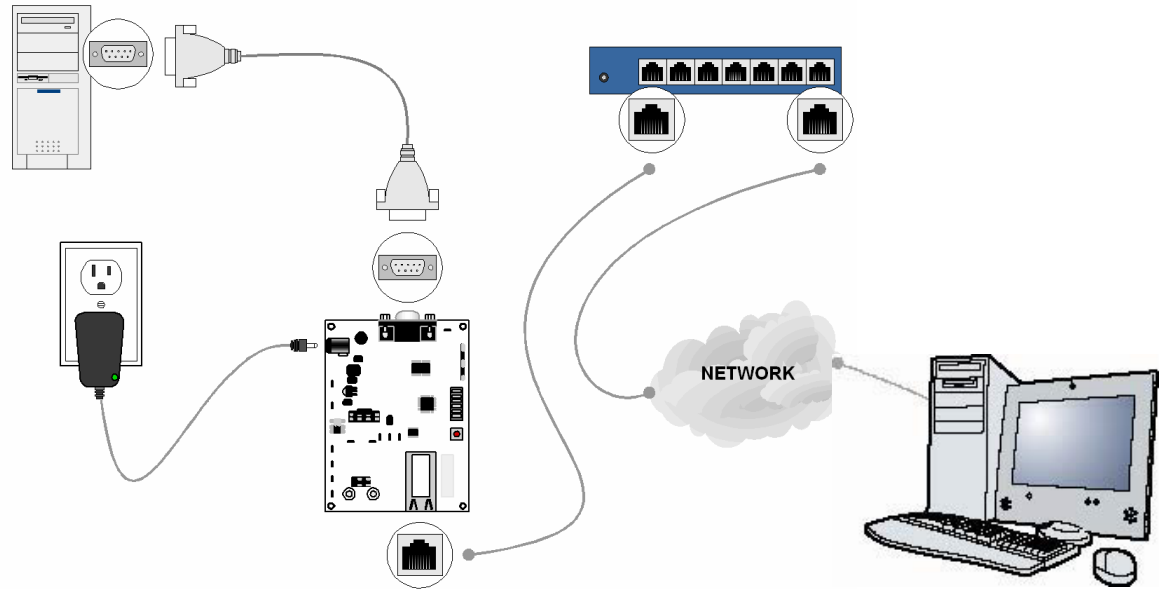


Connect the Universal Power Supply to the XPort Evaluation Board.



Select the appropriate power plug adaptor for your geographical location. Insert it into the slot on the Universal Power Supply; then plug the power supply into an outlet.

The final setup should look like this:



Verification Check: If powered up correctly, the XPort Evaluation Board power LED indicator lights red and remains on. This LED is next to the 5VDC barrel connector on the evaluation board.

What You Need to Know

Hardware Address

You need to know the unit's hardware address (also known as a MAC address). It is on the product label, in the format: 00-20-4a-XX-XX-XX, where the XXs are unique numbers assigned to the product.

Hardware Address: 00-20-4a-____-____-____

IP Address

Your XPort must have a unique IP address on your network. The systems administrator generally provides the IP address, subnet mask, and gateway. The IP address must be within a valid range, unique to your network, and in the same subnet as your PC.

IP Address: _____

Subnet Mask: _____

Gateway: _____

You have several options for assigning an IP to your unit. We recommend that you connect the XPort to the network and assign the IP address using DeviceInstaller software, which is on the product CD. For information on other methods, see the *XPort User Guide*.

Install DeviceInstaller

1. Open DeviceInstaller on the CD-ROM.
If the CD does not launch automatically:
 - a. Click the **Start** button on the Task Bar and select **Run**.
 - b. Enter your CD drive letter, colon, backslash, **Launch.exe** (e.g., D:\Launch.exe).
2. Respond to the installation wizard prompts.


Note: For more information about DeviceInstaller, see the DeviceInstaller User Guide on the product CD and the DeviceInstaller help file.

Assign IP

The unit's IP address is normally set to 0.0.0.0 at the factory. The hardware address is on the product label. The unit is DHCP enabled as the default.

1. Click **Start**→**Programs** → **Lantronix**→**DeviceInstaller**→**DeviceInstaller**. If your PC has more than one network adapter, a message displays. Select an adapter and click **OK**.

Note: If the unit already has an IP address (e.g., DHCP has assigned an IP address), click the **Search** icon and select the unit from the list of Lantronix device servers on the local network.

2. Click the **Assign IP** icon .
3. If prompted, enter the hardware address (on the product label) in the format 00-20-4a-XX-XX-XX, where the XXs are unique numbers assigned to the product. Click **Next**.

Device Identification

Enter the hardware address of the device. This is typically printed on the back panel of the device in the form "12-34-56-78-9A-BC".

4. Select **Assign a specific IP address** and click **Next**.

Assignment Method

Would you like to specify the IP address or should the unit get its settings from a server out on the network?

Obtain an IP address automatically

Assign a specific IP address

5. Enter the **IP address**. The **Subnet mask** displays automatically based on the IP address; if desired, you may change it. On a local network, you can leave the **Default gateway** blank (all zeros). Click **Next**.

IP Settings

Please fill in the IP address, subnet, and gateway to assign the device. The subnet will be filled in automatically as you type, but please verify it for accuracy. Incorrect values in any of the below fields can make it impossible for your device to communicate, and can cause network disruption.

IP address:

Subnet mask:

Default gateway:

- Click the **Assign** pushbutton and wait several seconds until a confirmation message displays. Click **Finish**.
- Select the XPort from the main window list and click **Tools→Ping**. The results display in the Status area. Click the **Clear Status** button to clear the window so you can ping the device again.

IP Address:

Status:

```
Reply from 172.19.238.20: bytes=60 time=0ms TTL=64
Reply from 172.19.238.20: bytes=60 time=0ms TTL=64
Reply from 172.19.238.20: bytes=60 time=0ms TTL=64
Reply from 172.19.238.20: bytes=60 time=0ms TTL=64
```

Note: If you do not receive “Reply” messages, make sure the unit is properly attached to the network and that the IP address assigned is valid for the particular network segment you are working with.

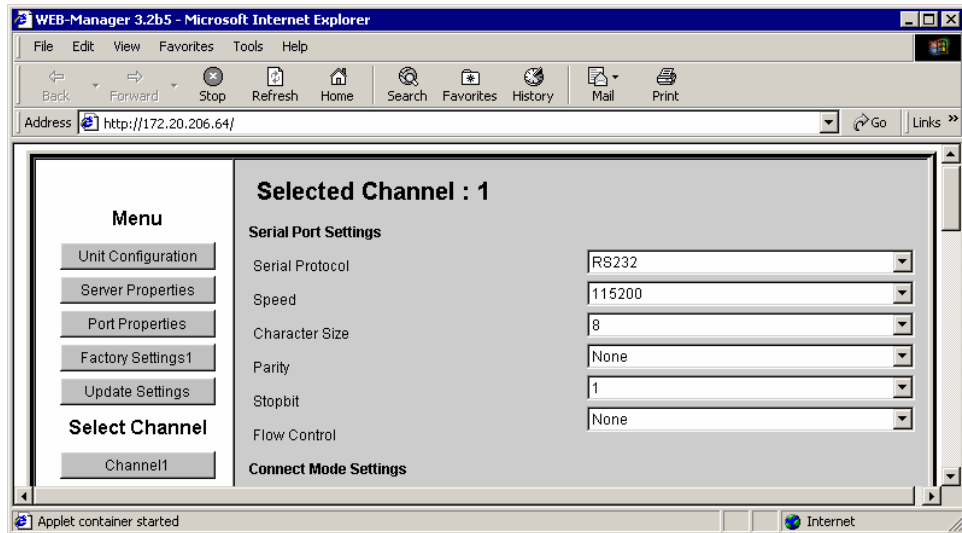
- Click the **Close** pushbutton.

Configure

In this quick start, we briefly describe how to configure the XPort using Web-Manager, Lantronix's browser-based configuration tool. For detailed information on Web-Manger configuration and on other methods, please see the *XPort User Guide*.

1. Select the unit and click the **Web** icon . The Lantronix Web-Manager window displays in your browser.

Note: You can also open your JAVA enabled web browser and enter the IP address of the XPort™ to open Web-Manager.



2. Use the Menu (pushbuttons) on the left to navigate to sub pages where you can configure the XPort.
3. When you are finished, click the **Update Settings** button to save your settings.